



Photograph submitted by WEHRA – “Drain for another business used by Po Na Na”



Photograph submitted by WEHRA – “Filthy access alley to access drains for 1B Kings Rd”



Photograph submitted by WEHRA - "PoNaNa current front with filthy dirty first floor"



Photograph submitted by WEHRA - "PoNaNa rubbish left in alleyway"



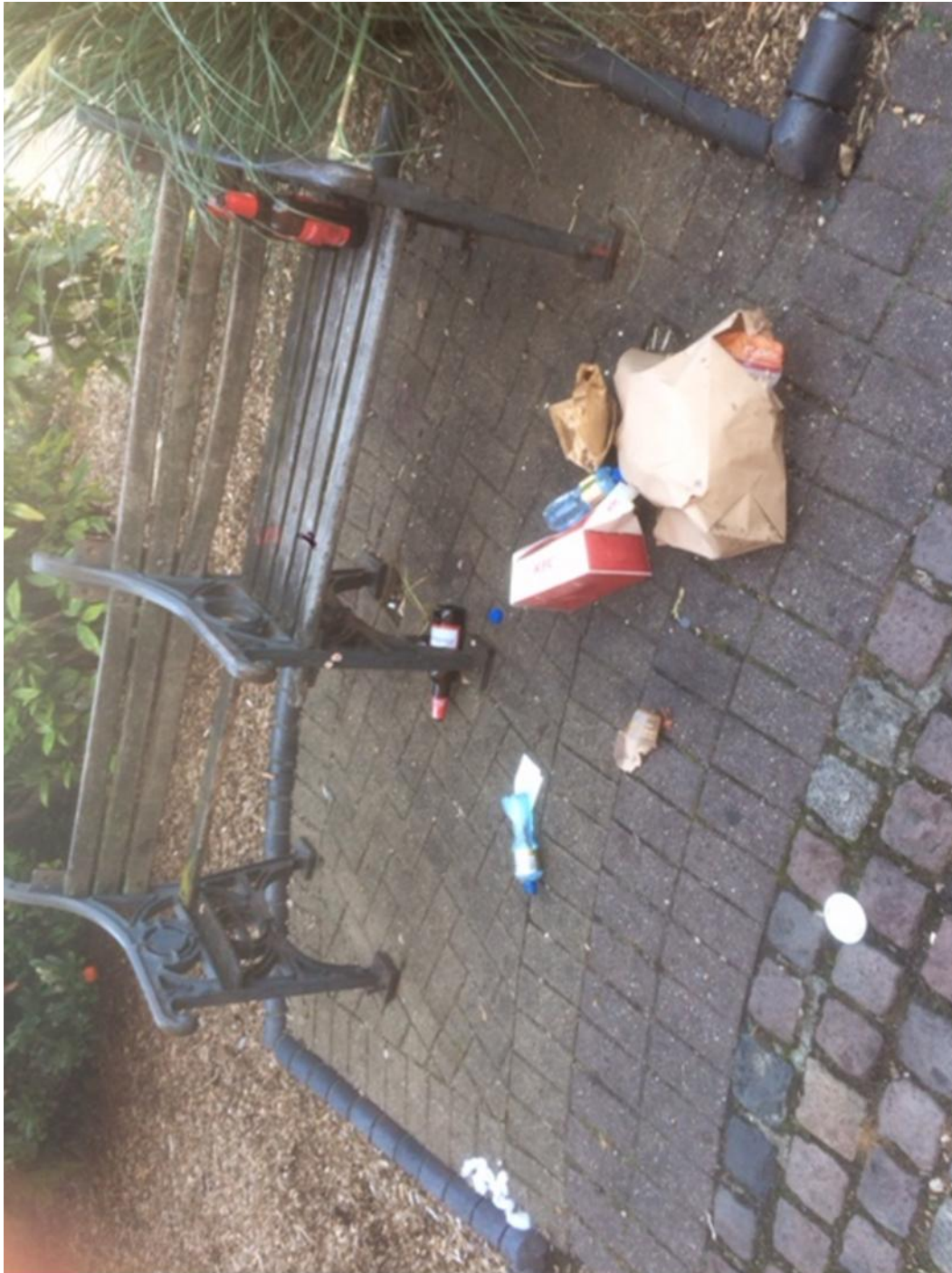
Photograph submitted by WEHRA - "Rubbish from PoNaNa in unsecured shed"



Photograph submitted by WEHRA – “Street scene local residents have to put up with”



Photograph submitted by WEHRA - "Sunday morning across from PoNaNa"



Photograph submitted by WEHRA – “WTC Night Time Dis-Economy”